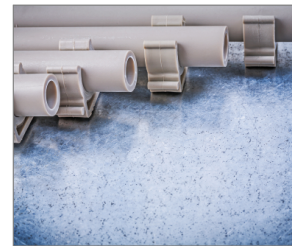


# R-KSC plastic collated pins for steel with fuel cells

Step shank galvanised pins for lightweight steel applications



## Product information

### Features and benefits

- Ballistic point increases performance into the base material. This special design is responsible for providing best load bearing values for this type of fixing
- Smooth shank and toughness of 57 - 60 HRC provides great penetration ability and give best result in hard substrates
- Plastic collation provides protection from deterioration by weather conditions or high humidity
- Compatible with leading manufactures tools currently on the market
- Full round head for a secure fixing with the highest performance achieved

### Applications

- Fixing steel profiles into concrete in drywall systems
- Fixing electrical boxes, sanitary ware, cable trunking, etc.
- Cable conduits and wires installation

### Base materials

- Structural Steel

### Corresponding products

- R-RAWL-SC40 Gas powered steel and concrete nailer



## Installation data

Substrate			Steel
Effective embedment depth	$h_{ef}$	[mm]	3
Min. spacing	$s_{min}$	[mm]	90
Min. edge distance	$c_{min}$	[mm]	45

## Basic performance data

Base materials		Steel	
<b>CHARACTERISTIC LOAD</b>			
<b>TENSION AND SHEAR LOAD <math>F_{rk}</math></b>			
Sheet metal thickness = 0.5 mm	[kN]		1.37
Sheet metal thickness = 0.63 mm	[kN]		1.74
Sheet metal thickness = 0.75 mm	[kN]		2.47
Sheet metal thickness = 0.88 mm	[kN]		2.49
Sheet metal thickness = 1 mm	[kN]		2.55
<b>DESIGN LOAD</b>			
<b>TENSION AND SHEAR LOAD <math>F_{rd}</math></b>			
Sheet metal thickness = 0.5 mm	[kN]		1.03
Sheet metal thickness = 0.63 mm	[kN]		1.31
Sheet metal thickness = 0.75 mm	[kN]		1.86
Sheet metal thickness = 0.88 mm	[kN]		1.84
Sheet metal thickness = 1 mm	[kN]		1.92
<b>RECOMMENDED LOAD</b>			
<b>TENSION AND SHEAR LOAD <math>F_{rec}</math></b>			
Sheet metal thickness = 0.5 mm	[kN]		0.74
Sheet metal thickness = 0.63 mm	[kN]		0.93
Sheet metal thickness = 0.75 mm	[kN]		1.33
Sheet metal thickness = 0.88 mm	[kN]		1.34
Sheet metal thickness = 1 mm	[kN]		1.37

## Product commercial data

Index	Fastener diameter	Length	Head type	Shank type	Finish	Protection	Collation	Fasteners per strip	Carton quantity	Fuel cells per carton	Box weight	Outer weight	EAN
	[mm]	[mm]						[pcs]	[pcs]	[pcs]	kg	kg	
R-KSC-6/15/500	2.7	15	Full Round	Smooth	Electro galvanized	Up to 4 microns	Plastic strip	10	500	1	0.59	7.03	5906675474144
R-KSC-6/17/500	2.7	17	Full Round	Smooth	Electro galvanized	Up to 4 microns	Plastic strip	10	500	1	0.64	7.66	5906675438177
R-KSC-6/19/500	2.7	19	Full Round	Smooth	Electro galvanized	Up to 4 microns	Plastic strip	10	500	1	0.69	8.28	5906675438184
SPG-R-KSC-6/15	2.7	15	Full Round	Smooth	Electro galvanized	Up to 4 microns	Plastic strip	10	1000	0	1.53	1.53	5906675286013
SPG-R-KSC-6/17	2.7	17	Full Round	Smooth	Electro galvanized	Up to 4 microns	Plastic strip	10	1000	0	0.60	0.60	5906675324302
SPG-R-KSC-6/19	2.7	19	Full Round	Smooth	Electro galvanized	Up to 4 microns	Plastic strip	10	1000	0	0.70	0.70	5906675327549

### Technical Data

Parameter	Value	Norm
Substrate	Steel	
Sheet metal thickness	0.5mm	